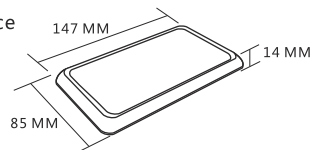
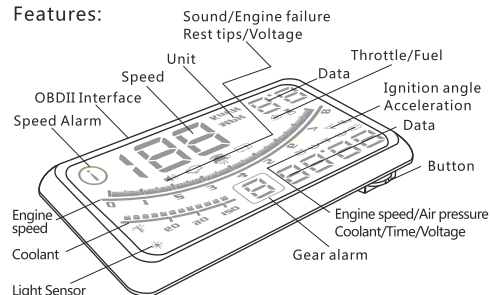


HEAD-UP DISPLAY

Appearance



Features:



4 step installation

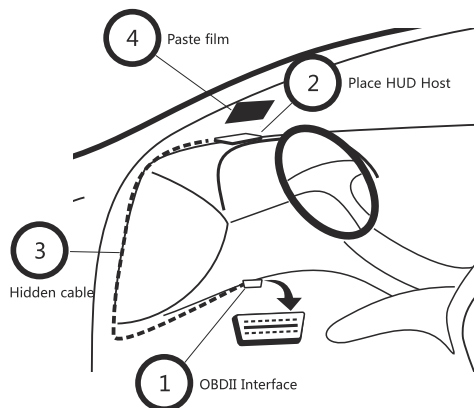
process :

① Find out OBDII interface --> Fixed Host --> Hidden line--> Paste film

Reflective film steps :

Clean the windshield and sprinkle with water, tear the ① label on the reflective film and affixed to the windshield, then tear the ② label on the reflective film , end.

★ If the ghosting is not serious, the reflective film should not be applied

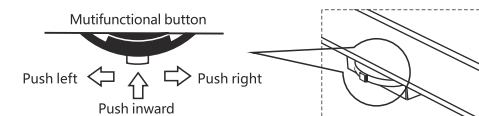


3 step into settings mode

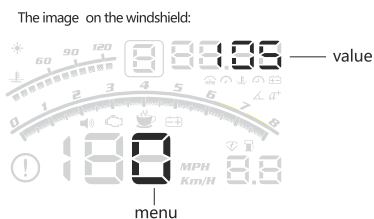
[setted it when the value of HUD is inaccurate]

① Confirm the HUD connect the car , start the car and wait for it work

② Find out the multifunctional button



③ Long push inward into settings mode ,do it again save and exit

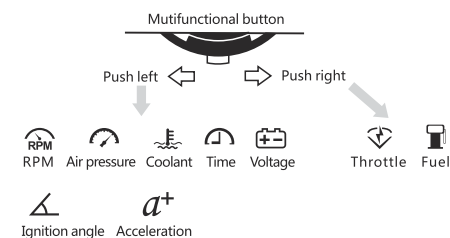


Menu have 28 item, in settings mode push inward into next item, push left or push right change the value

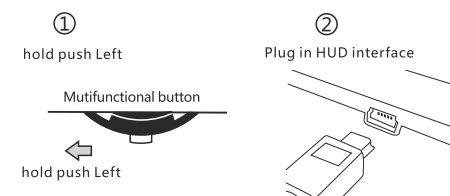
Fast setting

[Setting it after start the car, HUD work OK]

Quick change interface



Restore factory default settings

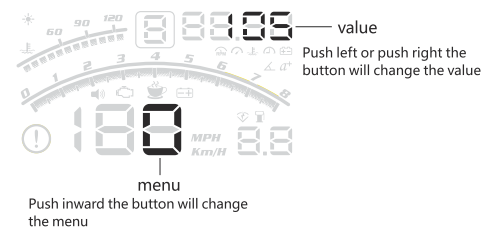


Menu and Value

[Setting it after start the car, HUD work OK]

Long push inward into settings mode

The image on the windshield:



Comparison table

Menu	name	image on windshield	explain
0	Speed	180 88.85	The speed will change with the value
1	RPM	181 88.85	The engine speed will change with the value
2	Oil wear	182 88.85	The oil consumption will change with the value
3	RPM Alarm	183 88.85	Setting the engine speed alarm value
4	Speed Alarm mode	184 88.85	0-setting the speed alarm value 1-60,80,100,120KM/H will alarm
5	Speed Alarm value	185 88.85	you can set any speed alarm value

Menu	name	image on windshield	explain
6	Coolant alarm	186 88.85	Setting coolant alarm value
7	User interface	187 88.85	0-auto(above 80km/h only speed) 1-Normal display 2-Only speed
8	Brightness	188 88.85	0-auto brightness 1-11 manual setting brightness
9	Oil wear calculation	189 88.85	0-Air metre 1-Oil wear reference 0.2,0.3,0.4,,use displacement
10	Start HUD ways	190 88.85	0-Manual settings(default) 1-Auto
11	Start HUD voltage	191 88.85	Range 11.0v- 15.0v, above setting value HUD on,below will off
12	RPM switch	192 88.85	0-Shut off RPM image 1-Turn on RPM image
13	Oil wear select	193 88.85	0-Constantly 1-Overall
14	Oil wear Reference	194 88.85	Use displacement to calculate oil wear(9 item set to 1 it will work)
15	ECU rate	195 88.85	0-Fastest, 5-Slowest (Before setting consultant factory)
16	Top gear	196 88.85	setting manual transmission top gear
17	shift speed	197 88.85	setting shift speed lapse
18	Power off ways	198 88.85	0-Ordinary, 1-Hybrid electric, 2-Start-stop cars, 3/4-Special cars
19	Time setting	199 88.88	Push left set the value, Push right change hour and minute to set

Menu	name	image on windshield	explain
20	Alarm switch	200 88.88	0-Shut off alarm, 1-Turn on alarm 2-Turn on fault alarm
21	Sound switch	201 88.88	0-Shut off sound alarm 1-Turn on sound alarm
22	Speed unit	202 88.88	0-Km/h 1-MPH
23	Reset	203 88.88	Push down or Push up
24	Clear fault	204 88.88	Insert OBDII interface, don't start car, put the key to "ON" gear Push left or Push right
25	Locked protocol	205 88.88	0-No locked 3,9-Locked the protocol
26	Special cars	206 88.88	0-Auto 1,2,3-Special cars
27	Coolant switch	207 88.88	0-Shut off coolant image 1-Turn on coolant image
28	Gear switch	208 88.88	0-Shut off gear image 1-Turn on gear image

For example:

① Ther car speed is 80km/h, but the HUD is 75km/h, how can I do ?

Long push inward the button-->into setting mode-->HUD show 0 1.05

Push left the button twice --> HUD show 0 1.07

Long Push inward the button--> save and exit

① Oil wear Reference User input based on experience Oil wear per 100km, HUD auto reverse calculate the constantly oil wear.

② My HUD time was wrong, how can I do ?

Long push inward the button-->into setting mode

Push inward the button 19 times --> HUD show 19 8.00

Push left the button many times --> set the hour--> Push right change to set the minute--> push left the button many times

Long Push inward the button--> save and exit

parameter

- Condition : temperature-40c+120c pressure86-106KPa relative humidity 10%-95% Ambient noise <=60dB(A)
- Working voltage : 11V~16Vdc(12Vdc/350mA)
- Working current : 60~500mA
- Standby current : <=30mA
- Host size : 147x85x14(mm)
- Screen size : 5.5inch 155x64(mm)
- Packing size : 225x150x50(mm)
- Total weight : 280g



MADE IN CHINA