

# GPS Tracker

with Remote Battery Monitor

## OBD Connector GPS Tracker

- Size: 102\*53\*18mm
- with 350mAh Li polymer backup battery



*T8124BMO*

## Engine Cabin GPS Tracker

- Size: 89mm x 45mm x 24mm
- with 500mAh Li polymer backup battery



*T9124BM*

# Unique

## Remote battery monitor

The owner can check the status of the car battery on his mobile phone anywhere, anytime.

## Low battery alert

Low battery alert SMS will be sent to owner's mobile phone when low battery voltage is detected. Even when the car is parked far away.

## Bad battery alert

Bad battery alert will be sent to owner when the abnormal battery performance which will cause engine start issue is detected.



# Feature

## **OBD Connector GPS Tracker**

*T8124BMO*

- with OBD connector which can be installed easily by end user
- GPS+GSM+WIFI positioning (GPS,WIFI is optional as request)
- Smartly monitoring the status of the car battery 7/24
- Low battery alert function
- Bad battery alert function
- Ambient temperature monitor
- Instant call alert for anti-theft when motion is detected
- Power on AUTOMATICALLY after installation
- Water-Proof Design, input voltage:12-24V
- Web based Real-time tracking and replay or locate via SMS
- Built-in motion sensor for power saving

# Feature

## **Engine Cabin GPS Tracker**

*T9124BM*

- install easily which just connect the power wire with the positive and negative connectors of car battery
- Difficult to find out when the thief try to disable the alarm system for car
- GPS+GSM+WIFI positioning (GPS,WIFI is optional as request)
- Enhanced GPS module specially designed for the engine cabin area
- Smartly monitoring the status of the car battery 7/24
- Low battery alert function
- Bad battery alert function
- Carbine temperature monitor
- Instant call alert for anti-theft when motion is detected
- Instant call alert for anti-theft when engine ignition on
- Power on AUTOMATICALLY after installation
- Water-Proof Design, input voltage:12-24V
- Web based Real-time tracking and replay or locate via SMS
- Built-in motion sensor for power saving

# Specification

- GPRS:MTK 6260A
- Quad band; 850/900/1800/1900 MHz
- Antennae: Internal, GPRS Class 12
- Power:12-24v
- Built-in Vibration/motion sensing
- Antennae: Internal
- GPS Position Accuracy: >5m
- GSM Position Accuracy: 100m-2000m
- WiFi Position Accuracy : 50-150m

# IPX7 water-proof

Waterproof 30 mins under 1 meter depth of water

Shenzhen CTL Electromagnetic Technology Co., Ltd.

## EC-R&TTE CERTIFICATE

**Certificate No.** : CTL1312232035-W  
**Applicant's Address** : VJOY CAR ELECTRONICS LIMITED  
No 9177, BeiQing Road, XiangHuaQiao Town, QingPu District, Shanghai, 201796 China  
**Manufacturer's Address** : SHENZHEN VJOY CAR ELECTRONICS LIMITED  
Building 20th, Xin Wei First Industry Park, FuYong Street, Shenzhen, 518100 China  
**Description of Equipment** : GPS TRACKER  
Support GSM900/DCS1800 MHz, with GPS function  
**Model Name** : T16, T12, T10, TT10, T18, T4400, T8800, T15400, T13, TT110, TT220, TT330, TT520  
**Trade Name** : VJOY

Essential Requirement	Applied Specifications/ Standards	Documentary Evidence	Result
Art. 3.1(a) Safety	EN 60950-1:2006+A1:2009+A1:2010+A12:2011	Test Report CTL1312232035-WS	Conform
Art. 3.1(a) Health	EN 62311: 2008	Test Report CTL1312232035-VH	Conform
Art. 3.1(p) EMC	ETSI EN 301 489-1 V1.9.2	Test Report CTL1312232035-WE	Conform
	ETSI EN 301 489-3 V1.4.1		
	ETSI EN 301 489-7 V1.3.1		
Art. 3.2 Radio	ETSI EN 300 440-1 V1.6.1	Test Report CTL1312232035-WR02	Conform
	ETSI EN 300 440-2 V1.4.1		
	ETSI EN 301 511 V9.0.2	Test Report CTL1312232035-WR01	Conform

The EUT described above has been tested by us with the listed standards and found in compliance with the council R&TTE directive 1999/5/EC. It is possible to use CE marking to demonstrate the compliance with the Directive.  
The scope of evaluation relates to the submitted documents only.

**CE**   
For Chief Executive  
Dec. 23, 2013

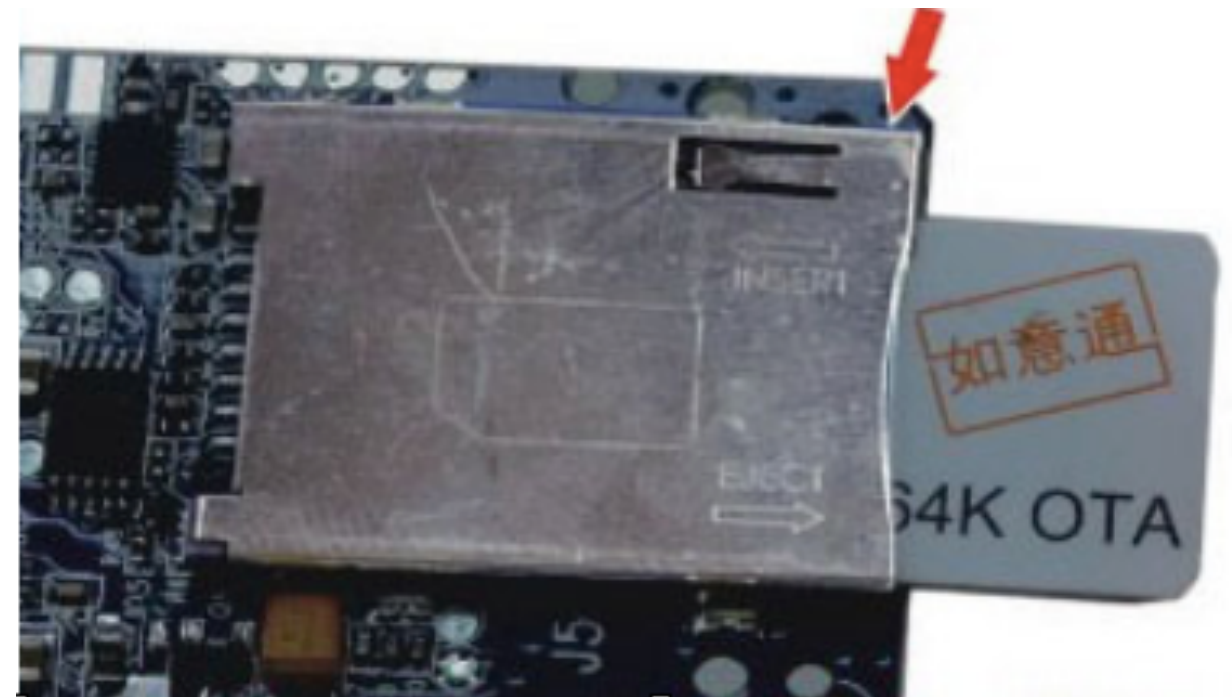
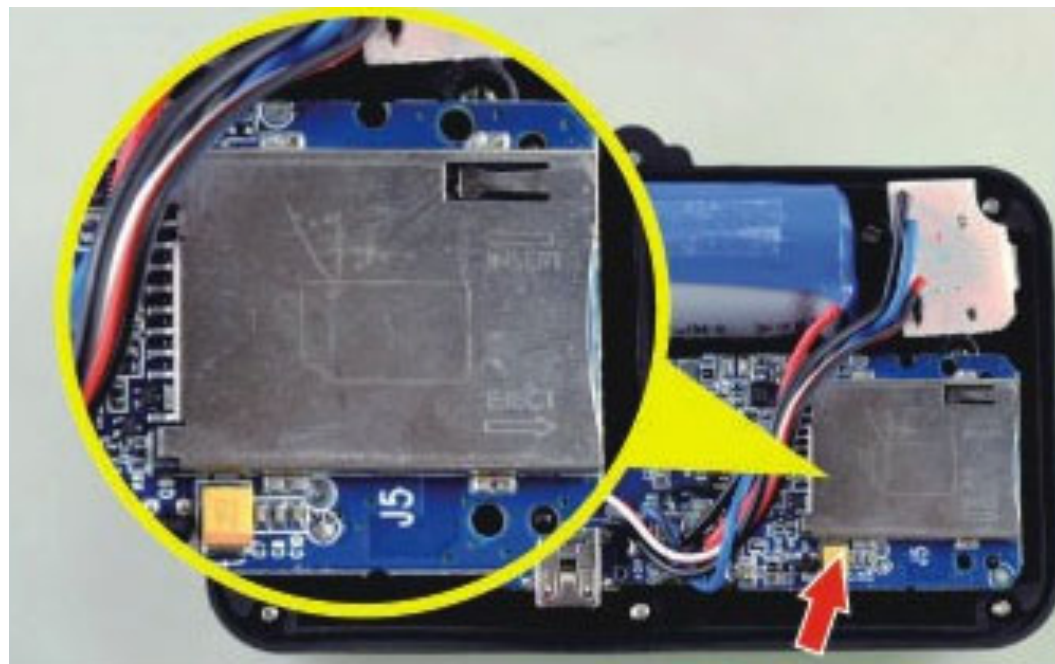


Add: Floor 1-A, Baishu Technology Park, No.3011, Shatouhai Road, Nanshan District, Shenzhen, China 518055  
Tel: 86 0755-81486194 Fax: 86 0755-26638041 Web: www.ctl-lab.com



# Self-locking sim slot

to make sure sim card works well even at shock or vibration environment





# Dual CPU Design

Dual CPU watch-dog to avoid system crash

