

# Installation Tracker

With 1050mAh backup battery



**T5124**

**IPX7**

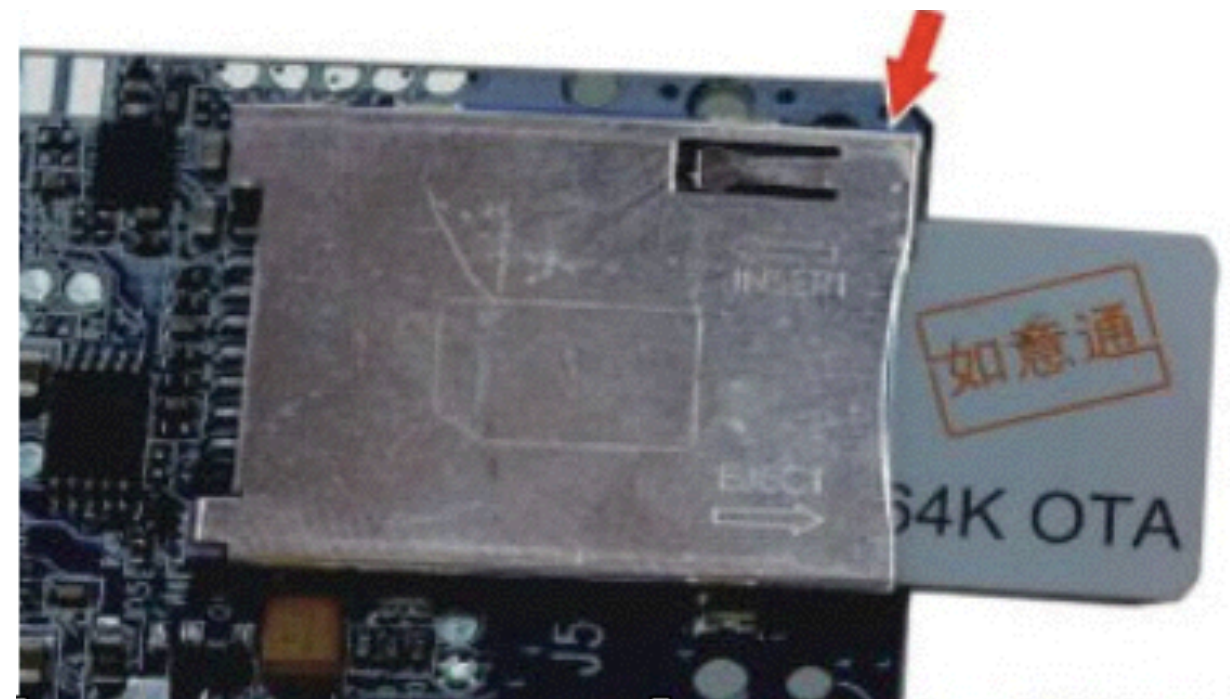
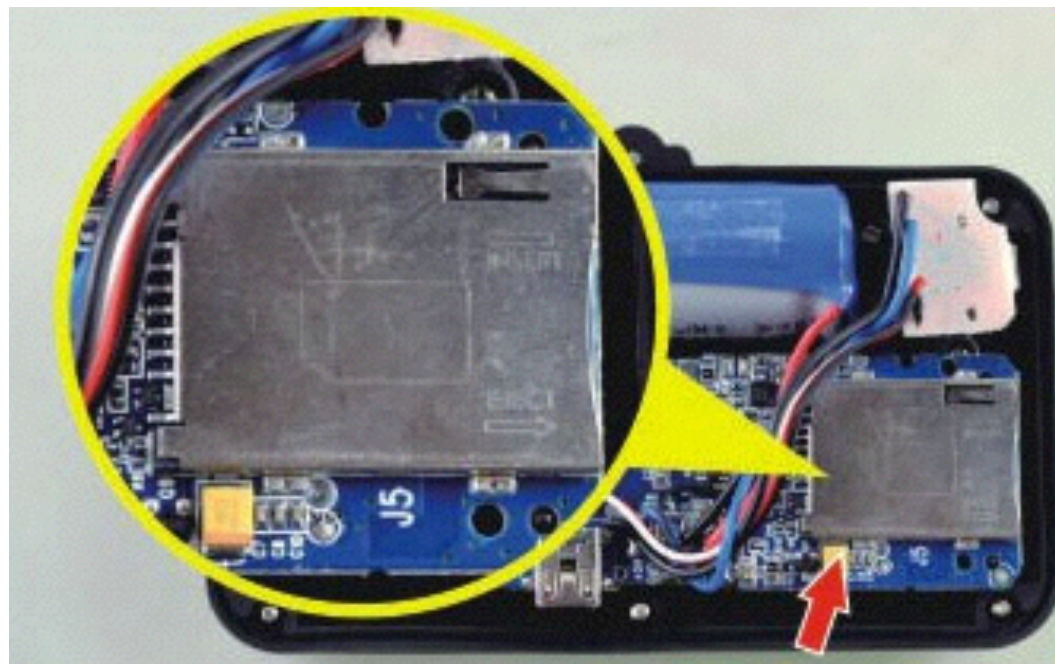
Waterproof  
Certification

# Feature

- It's suitable for Vehicle, Motorcycle, and E-bike
- Size: 100mm x 55mm x 20mm
- IPX7, Water-Proof Design, 2 input voltage: 12-24V or 48-80V
- Instant call alert for anti-theft when motion is detected
- Power cut alert when battery wire is cut off
- Power on AUTOMATICALLY after installation
- Built-in GPS/GPRS and Antenna
- Web based Real-time tracking and replay or locate via SMS
- Built-in motion sensor for power saving
- 1050mAh Lithium backup battery built-in
- Option: OBD connector

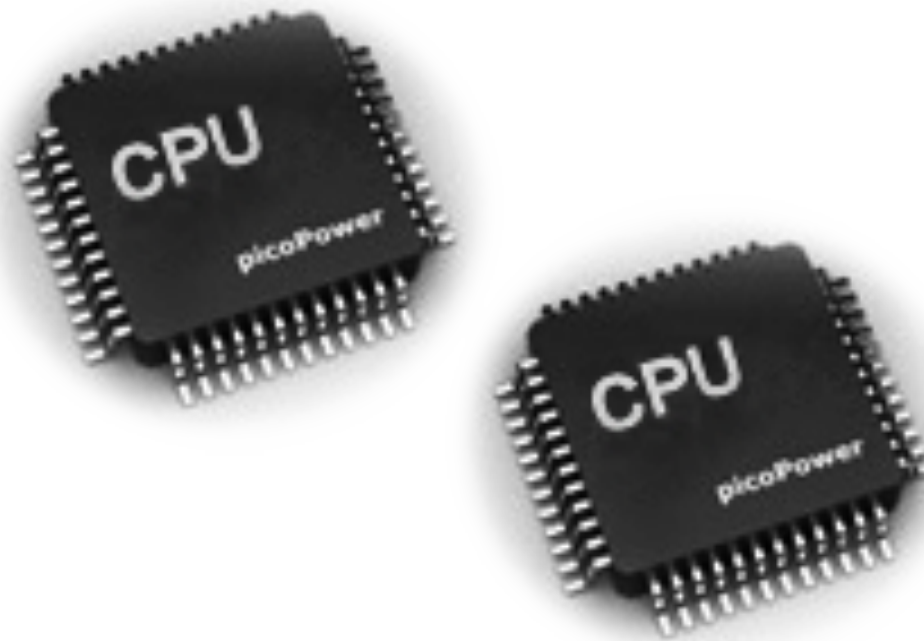
# Self-locking sim slot

to make sure sim card works well even at shock or vibration environment



# Dual CPU Design

Dual CPU watch-dog to ensure no any freeze or crash



# Cross-platform Tracking Software

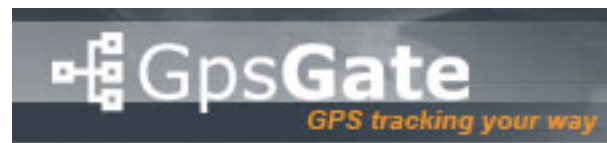
Website

WeChat

IOS

Android

Compatible with third party platform





# Specification

- Size: 100mm x 55mm x 20mm
- 1050mAh Lithium battery build-in
- GPRS:MTK 6260D
- Quad band; 850/900/1800/1900 MHz
- Antennae: Internal, GPRS Class 12
- Power:12-24v or 48-80v
- Built-in Vibration/motion sensing
- GPS: U-BLOX G7010-ST, 50 channel
- Antennae: Internal
- Position Accuracy: <5m
- Sensitivity: Tracking: (R)C161 dB, Cold starts: (R)C148 dB, Hot starts: (R)C156 dB
- Cold start:<27s, Warm Start: <5s, Hot Start: 1s
- A-GPS: AssistNow Online and AssistNow Offline services

