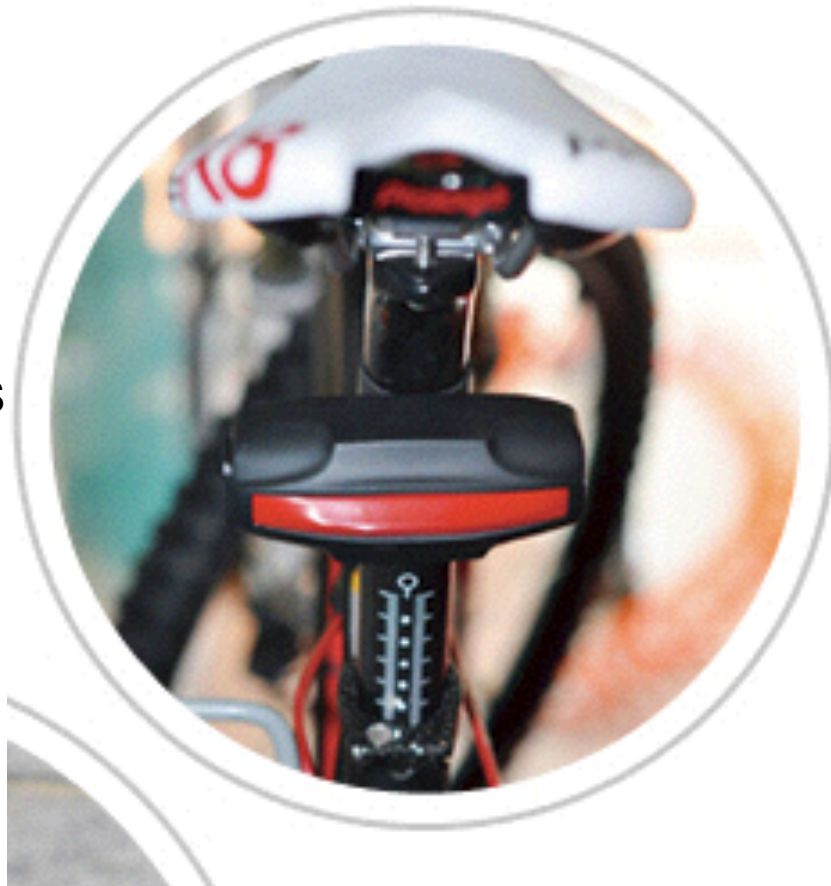


GPS Tail-light

High Camouflage Effect,
looks and works as a regular taillight.

T18 Rear Lamp GPS



T18h Front lamp GPS

Feature

- GPS Tracker for Bicycle
- Build-in GPS/GPRS and Antenna
- Web based tracking and replay
- Instant call alert for anti-theft feature
- on AUTOMATICALLY with motion
- BRIGHT LED, visible from any angle
- 2000mAh rechargeable Lithium-polymer battery
- IPX7 Water-Proof Design
- Built-in watchdog CPU to avoid system crash

IPX7 water-proof

Waterproof 30 mins under 1 meter water

Shenzhen CTL Electromagnetic Technology Co., Ltd.

EC-R&TTE CERTIFICATE

Certificate No. : CTL1312232035-W
Applicant's Address : VJOY CAR ELECTRONICS LIMITED
No.9177, BeiQing Road, XiangHuaQiao Town, QingPu District,
Shanghai, 201799 China
Manufacturer's Address : SHENZHEN VJOY CAR ELECTRONICS LIMITED
Building 20th, Xin Wei First Industry Park, FuYong Street,
ShenZhen, 518100 China
Description of Equipment : GPS TRACKER
Support GSM900/DCS1800 MHz, with GPS function
Model Name : T16, T12, T10, TT10, T18, T4400, T8800, T15400, T13, TT110,
TT220, TT330, TT520
Trade Name : VJOY

Essential Requirement	Applied Specifications/ Standards	Documentary Evidence	Result
Art. 3.1(a) Safety	EN 60950-1:2006+A11:2009+A1:2010+A12:2011	Test Report CTL1312232035-WS	Conform
Art. 3.1(a) Health	EN 62311: 2008	Test Report CTL1312232035-WH	Conform
Art. 3.1(b) EMC	ETSI EN 301 489-1 V1.9.2 ETSI EN 301 489-3 V1.4.1 ETSI EN 301 489-7 V1.3.1	Test Report CTL1312232035-WE	Conform
Art. 3.2 Radio	ETSI EN 300 440-1 V1.6.1 ETSI EN 300 440-2 V1.4.1 ETSI EN 301 511 V9.0.2	Test Report CTL1312232035-WR02 Test Report CTL1312232035-WR01	Conform Conform

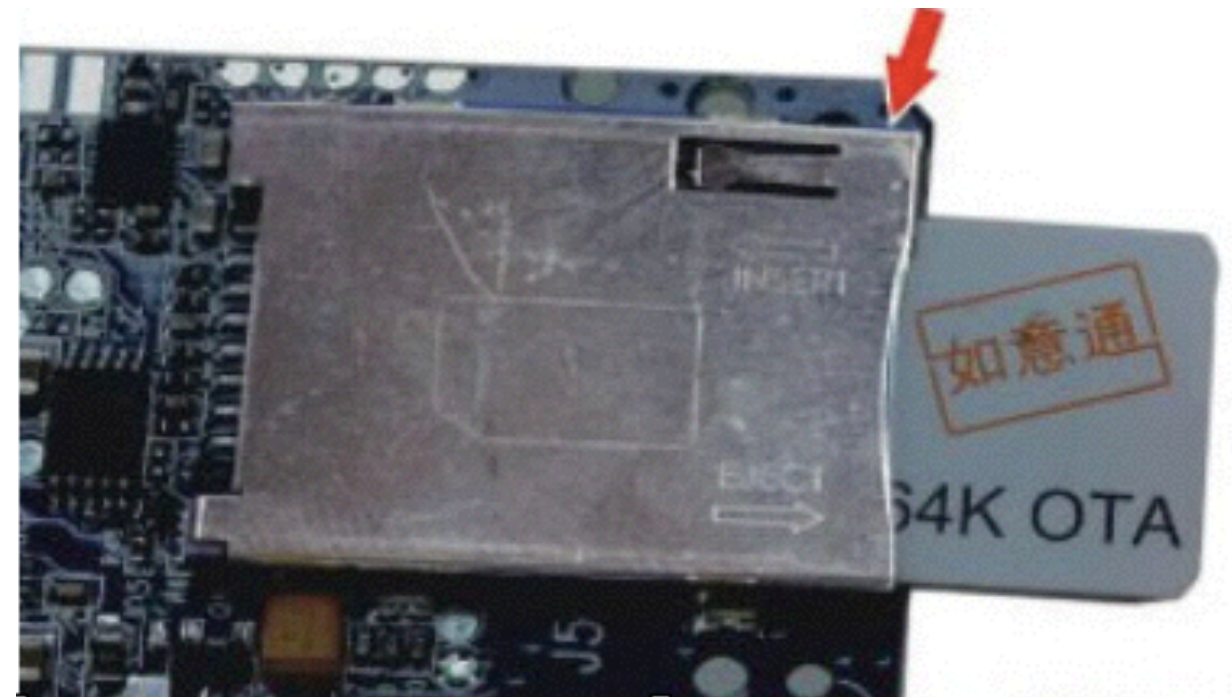
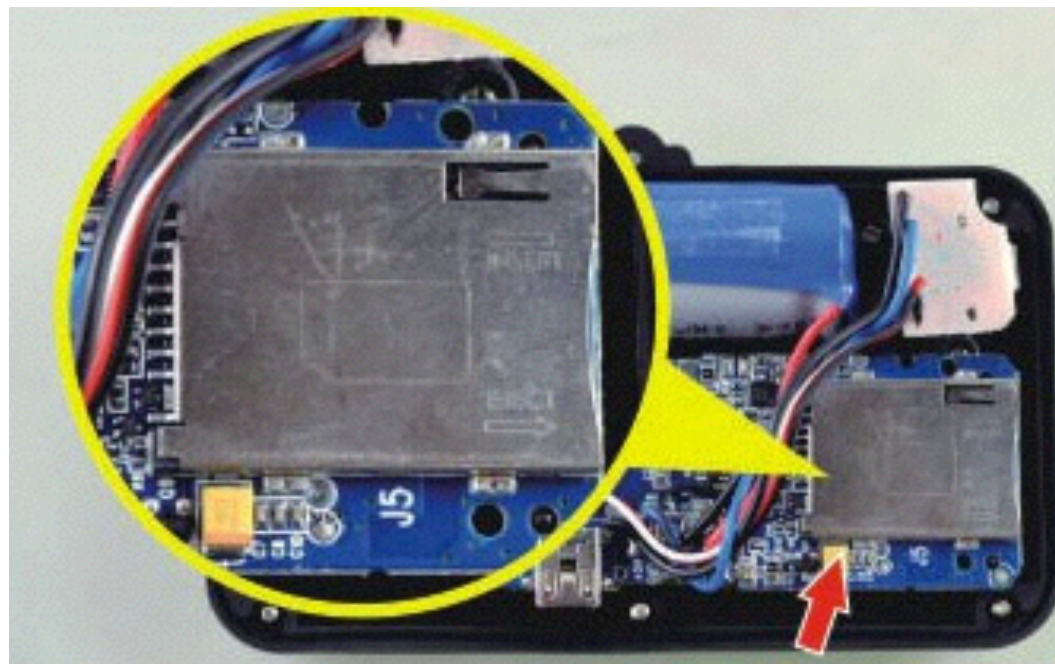
The EUT described above has been tested by us with the listed standards and found in compliance with the council R&TTE directive 1999/5/EC. It is possible to use CE marking to demonstrate the compliance with the Directive.
The scope of evaluation relates to the submitted documents only.

  
For Chief Executive
Dec. 23, 2013

Add: Floor 1-A, Baisha Technology Park, No.3011, ShaheSi Road, Nanshan District, Shenzhen, China 518055
Tel: 86-0755-89486194 Fax: 86-0755-26636041 Web: www.ctl-lab.com

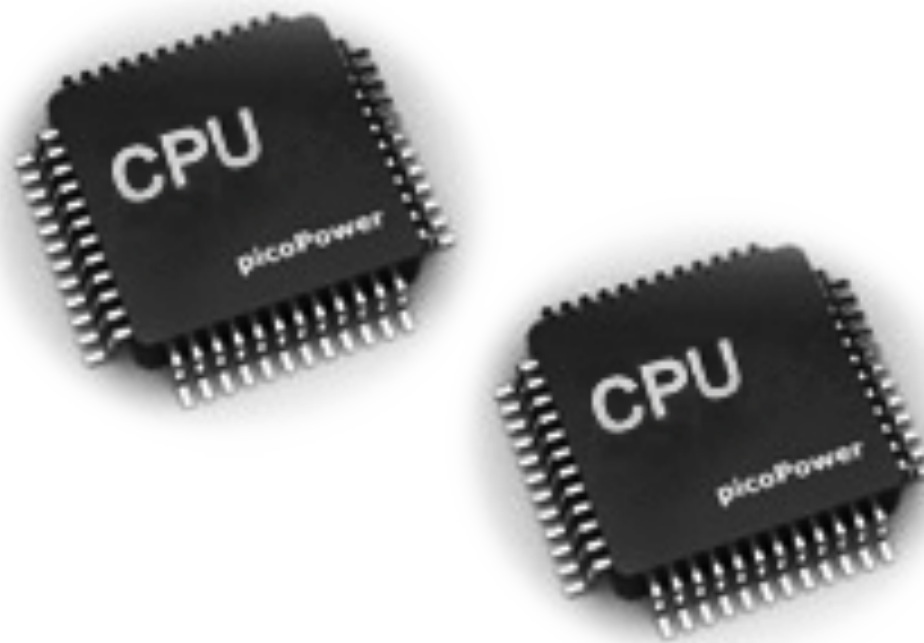
Self-locking Sim slot

Protect Sim when working in vibrating environment



Dual CPU Design

Dual CPU watch-dog to ensure no any freeze or crash



Cross-platform Tracking Software

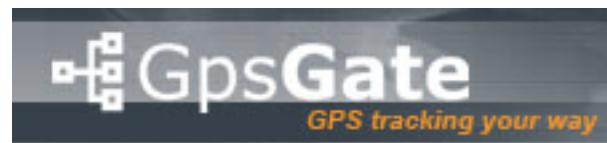
Website

WeChat

IOS

Android

Compatible with third party platform



Specification

- Size: 110mm x 50mm x 40mm
- GPRS:MTK 6260D
- Quad band; 850/900/1800/1900 MHz
- Antennae: Internal, GPRS Class 12
- Power:Rechargeable, 2000 mAh, Lithium-polymer Battery
- Built-in Vibration/motion sensing
- GPS: U-BLOX G7010-ST, 50 channel
- Antennae: Internal
- Position Accuracy: <5m
- Sensitivity: Tracking: (R)C161 dB, Cold starts: (R)C148 dB, Hot starts: (R)C156 dB
- Cold start:<27s, Warm Start: <5s, Hot Start: 1s
- A-GPS: AssistNow Online and AssistNow Offline services





