

# Magnetic GPS Tracker

**T15400**



# Feature

- Maximum 1260 days working time
- 15400mAh Lithium-iron battery
- GSM+GPS positioning with Google map tracking
- Waterproof design with strong magnets built-in
- Power bank function with 1A USB output

# Private Detective

Be attached on the car chassis just a second

# Flexible Portable

Suitable for family or company owns more than one car

# Home Alarm

Portable security device for safe and valuables



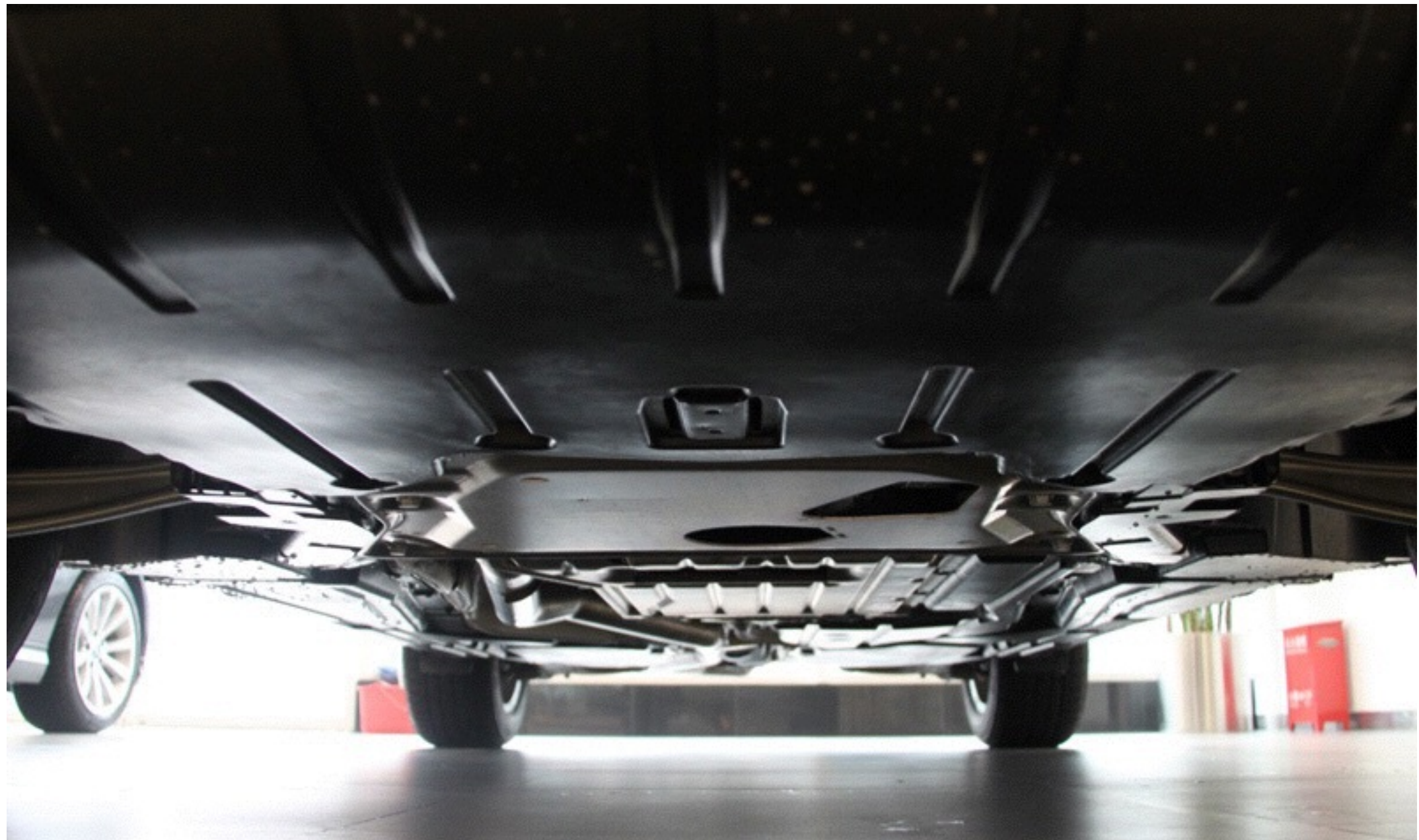
# Working Day

Tracking mode	T Series of Model			
	T12	T4400	T8800	T15400
6 location upload per day, the rest time in deep sleep mode	90-180 days	180-360 days	360-720 days	640-1260 days
1 location upload per 10 mins, the rest time in standby mode	5-12 days	10-24 days	20-48 days	35-84 days
Routetrack 24hours on(6 locations upload per 1 mins)	40-45 hours	80-90 hours	160-180 hours	280-315 hours
Battery Capacity	2200mAh	4400mAh	8800mAh	15400mAh



# Police & Detector's Best

Can be firmly attached under the CAR



# IPX7 water-proof

Waterproof 30 mins under 1 meter water

Shenzhen CTL Electromagnetic Technology Co., Ltd.

## EC-R&TTE CERTIFICATE

**Certificate No.** : CTL1312232035-W  
**Applicant& Address** : VJOY CAR ELECTRONICS LIMITED  
No.9177, BeiQing Road, XiangHuaQiao Town, QingPu District,  
Shanghai, 201799 China  
**Manufacturer& Address** : SHENZHEN VJOY CAR ELECTRONICS LIMITED  
Building 20th, Xin Wei First Industry Park, FuYong Street,  
ShenZhen, 518100 China  
**Description of Equipment** : GPS TRACKER  
Support GSM900/DCS1800 MHz, with GPS function  
**Model Name** : T16, T12, T10, TT10, T18, T4400, T8800, T15400, T13, TT110,  
TT220, TT330, TT520  
**Trade Name** : VJOY

Essential Requirement	Applied Specifications/ Standards	Documentary Evidence	Result
Art. 3.1(a) Safety	EN 60950-1:2006+A11:2009+A1:2010+A12:2011	Test Report CTL1312232035-WS	Conform
Art. 3.1(a) Health	EN 62311: 2008	Test Report CTL1312232035-WH	Conform
Art. 3.1(b) EMC	ETSI EN 301 489-1 V1.9.2 ETSI EN 301 489-3 V1.4.1 ETSI EN 301 489-7 V1.3.1	Test Report CTL1312232035-WE	Conform
Art. 3.2 Radio	ETSI EN 300 440-1 V1.6.1 ETSI EN 300 440-2 V1.4.1 ETSI EN 301 511 V9.0.2	Test Report CTL1312232035-WR02 Test Report CTL1312232035-WR01	Conform Conform

The EUT described above has been tested by us with the listed standards and found in compliance with the council R&TTE directive 1999/5/EC. It is possible to use CE marking to demonstrate the compliance with the Directive.  
The scope of evaluation relates to the submitted documents only.

**CE**   
For Chief Executive  
Dec. 23, 2013

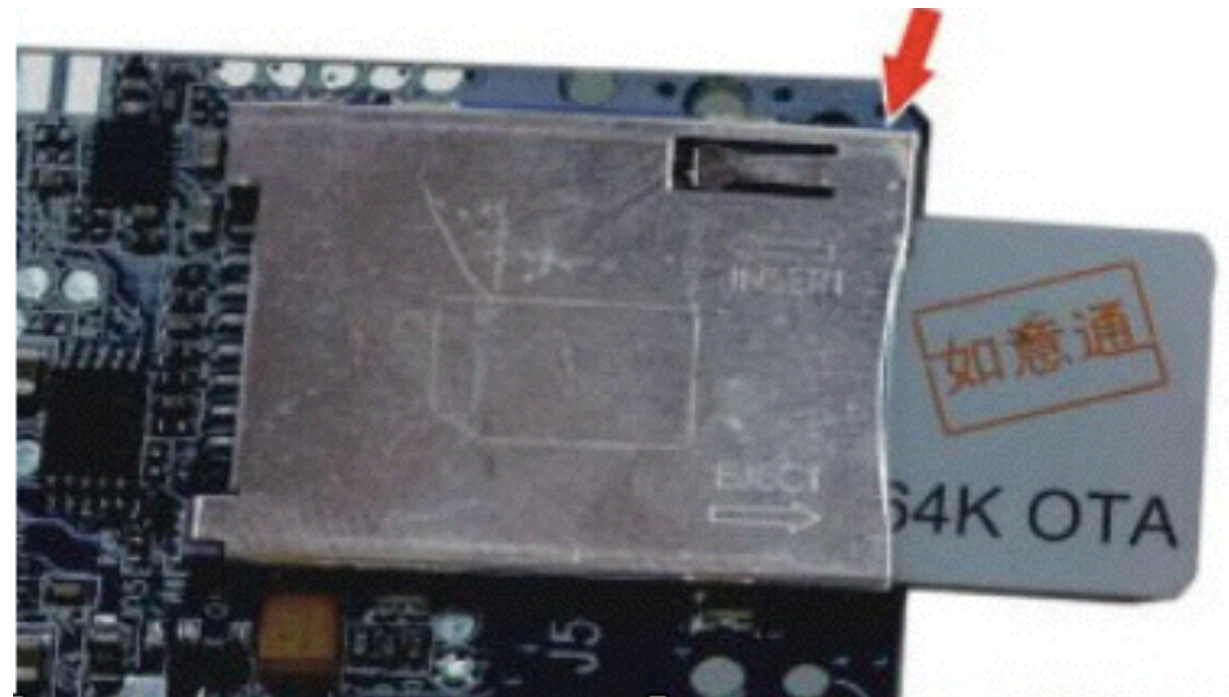
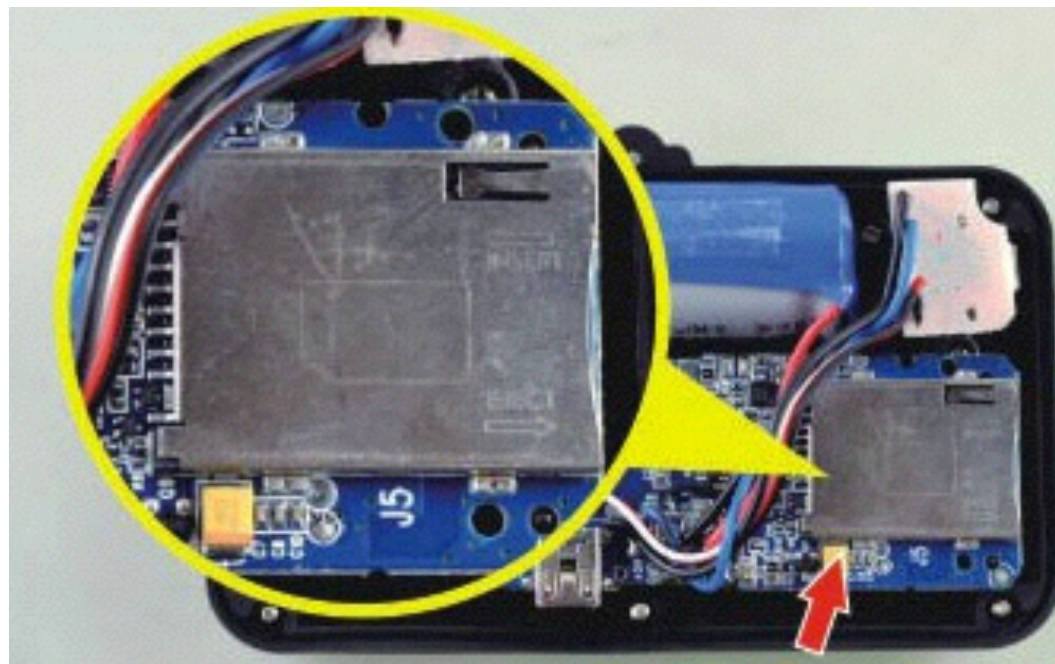


Add: Floor 1-A, Baisha Technology Park, No.3011, Shahezi Road, Nanshan District, Shenzhen, China 518055  
Tel : 86 0755-89486194 Fax : 86 0755-26636041 Web: www.cti-lab.com



# Self-locking sim slot

Protect Sim when working in vibrating environment



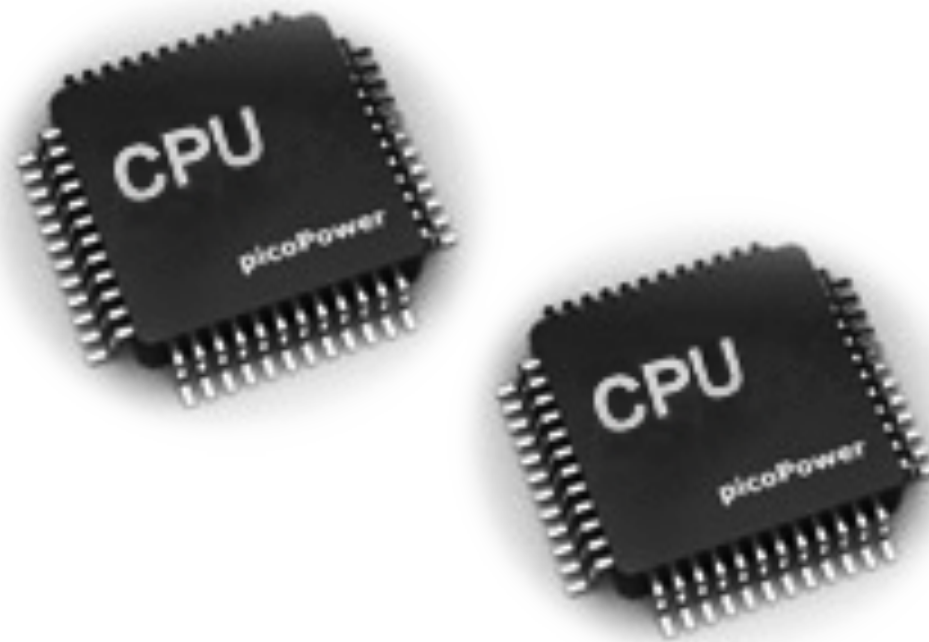
# Super Magnet

3 pcs NdFeB permanent magnets



# Dual CPU Design

Dual CPU watch-dog to avoid system crash





# Cross-platform Tracking Software

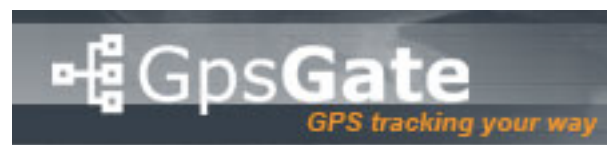
Website

WeChat

IOS

Android

Compatible with third party platform



# Specification

- Size: 165mm x 88mm x 40mm, Weight: 650g
- GPRS: MTK 6260D
- Quad band; 850/900/1800/1900 MHz
- Antennae: Internal, GPRS Class 12
- Power: Rechargeable, 10400 mAh, Lithium-ion Battery
- Built-in Vibration/motion sensing
- GPS: U-BLOX G7010-ST, 50 channel
- Antennae: Internal
- Position Accuracy: <5m
- Sensitivity: Tracking: (R)C161 dB, Cold starts: (R)C148 dB, Hot starts: (R)C156 dB
- Cold start: <27s, Warm Start: <5s, Hot Start: 1s
- A-GPS: AssistNow Online and AssistNow Offline services





